

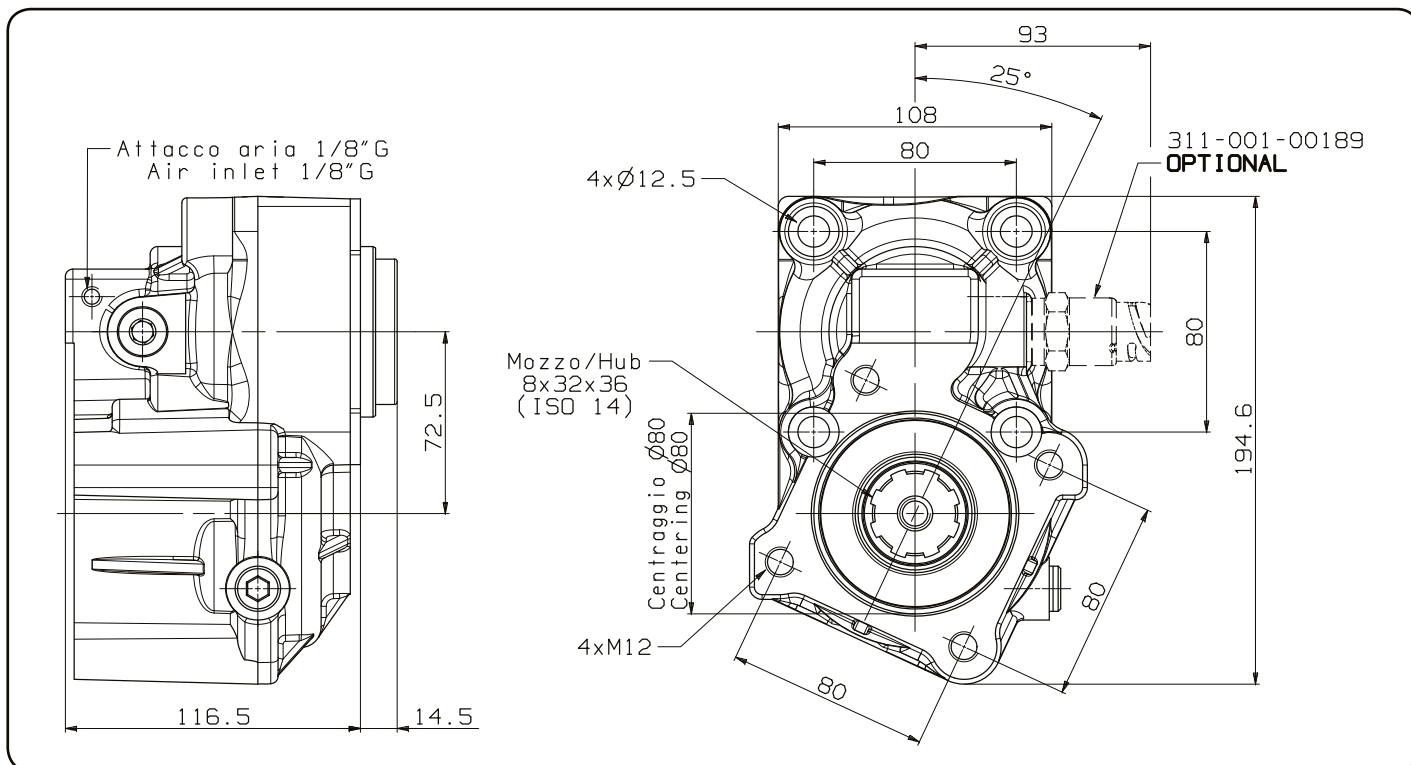
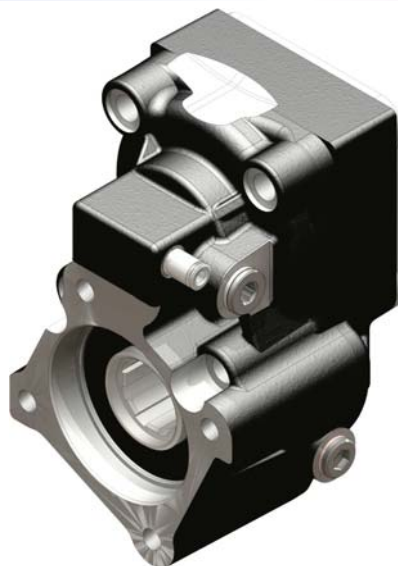
**PRESA DI FORZA A
COMANDO PNEUMATICO
PNEUMATIC CLUTCH
POWER TAKE-OFF**

CODICE PTO
PTO CODE

**016-071/072/
073/074/075**

CAMBIO
GEARBOX

**MERCEDES
G131...G330**



Codice PTO PTO code	Diametro giunto Cross joint diameter		Rapporto Ratio	Versione Version	Giri pto a 1000 giri motore Pto ratio@1000 eng.rpm rpm	Coppia massima Max torque Nm	Rotazione Rotation	Peso Weight
	180 mm	202 mm						
016-071-00172	✓		1:1,81	17	Vedi indice See index	330	Antioraria Acw	10,2 Kg
016-072-00171	✓		1:1,53			400		
016-073-00170	✓	✓	1:1,31			450		
016-074-00179	✓	✓	1:1			500		
016-075-00178	✓	✓	1:1,44			400		


pag.1



Per i cambi G131-G210-G211-G221-G230-G231-G240-G241-G260-G280-G281-G330, con il giunto da **180 mm**, si possono usare tutte le PTO sottoelencate:

- **016-071-00172 016-072-00171 016-073-00170 016-075-00178**

Per i cambi G211-G221-G230-G231-G240-G241-G260-G280-G281-G330, con il giunto da **202 mm**, si possono montare **SOLO** le PTO:

- **016-073-00170 016-074-00179 016-075-00178** in quanto presente sulla fusione un opportuno scarico  che ne consente il montaggio.

For the gearbox G131-G210-G211-G221-G230-G231-G240-G241-G260-G280-G281-G330, with joint to **180 mm**, you can use all below listed PTO's:

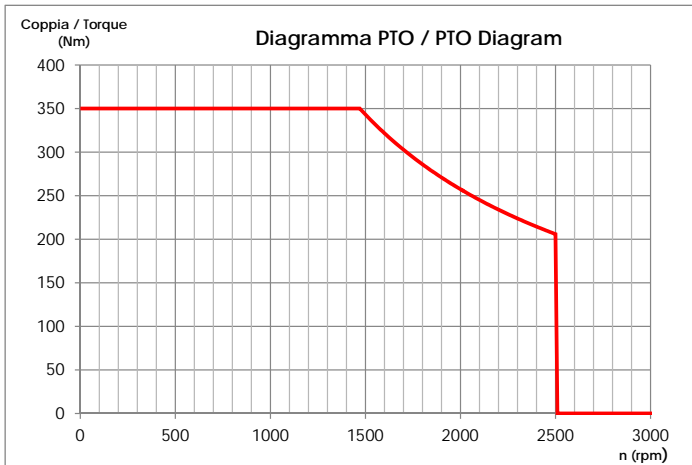
- **016-071-00172 016-072-00171 016-073-00170 016-075-00178**

For the gearbox G211-G221-G230-G231-G240-G241-G260-G280-G281-G330, with joint to **202 mm**, you can use **ONLY** PTO:

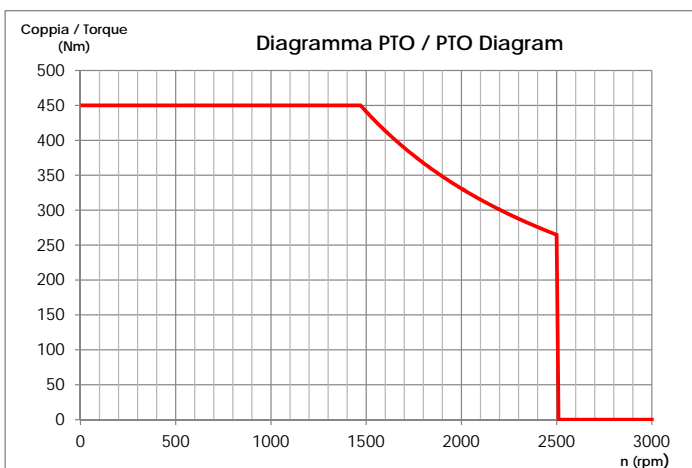
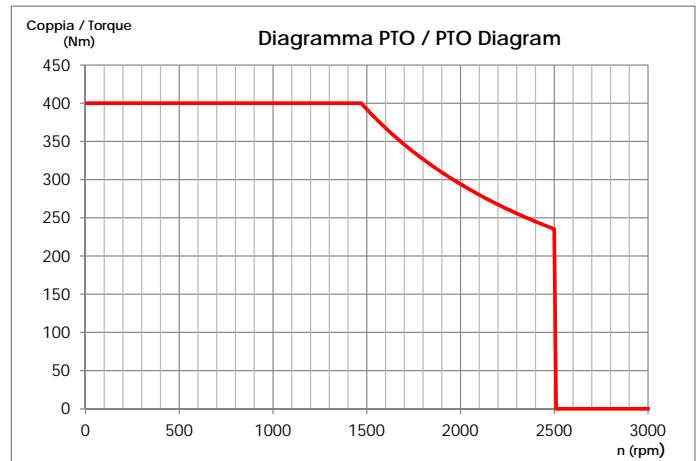
- **016-073-00170 016-074-00179 016-075-00178** since on the casting there is a grinding  which allows the correct mounting.

CONDIZIONI DI FUNZIONAMENTO / WORKING CONDITIONS

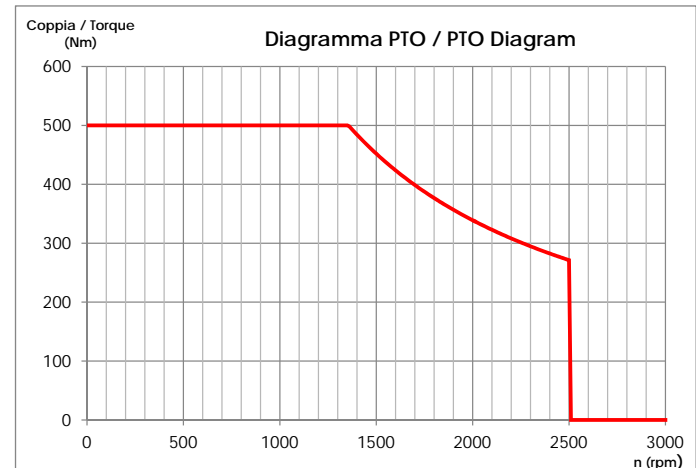
016-071-00172



**016-072-00171
016-075-00178**



016-073-00170



016-074-00179

I grafici, che indicano il prelievo di coppia in funzione del numero di giri, riguardano solamente la PTO. È necessario verificare il limite di prelievo di potenza dal cambio prima di effettuare l'applicazione.
The graphs indicating the allowed torque according to the RPM refers to the PTO only. It is necessary to check the torque limit of the gearbox before fitting the PTO.

pag.2

COMPANY WITH
QUALITY SYSTEM
CERTIFIED BY DNV GL
= ISO 9001 =

O.M.F.B. Hydraulic Components
We reserve the right to make any changes without notice.
Edition Edition 2007.05 No reproduction, however partial, is permitted.
Via Cave, 7/9 25050 Provaglio d'Iseo (Brescia) Italy Tel.: +39.030.9830611
Fax: +39.030.9839207-208 Internet:www.omfb.it e-mail:info@omfb.it

OMFB
HYDRAULIC COMPONENTS

Data: Giovedì 07 luglio 2016

Codice foglio:997-216-07117 Rev:AD